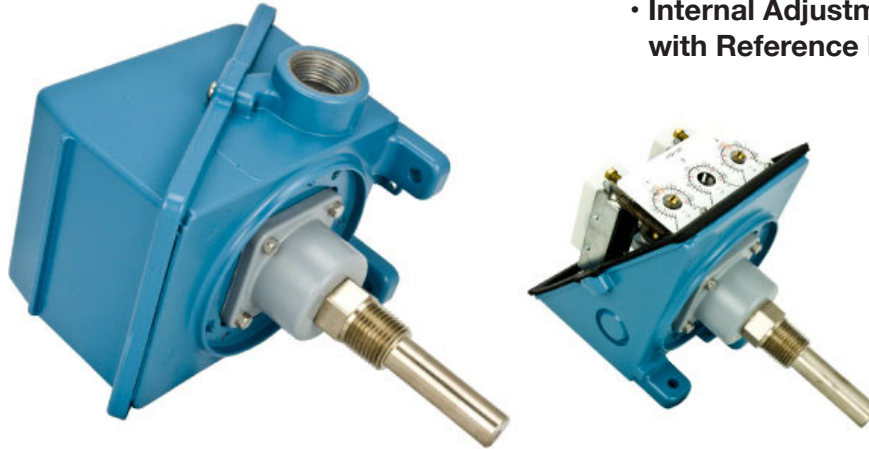


TM-S2 Temperature Monitor

A versatile vacuum, pressure, differential pressure and temperature switch for single or multiple switching capabilities.



- Dual Switch Output
- Internal Adjustment with Reference Dial

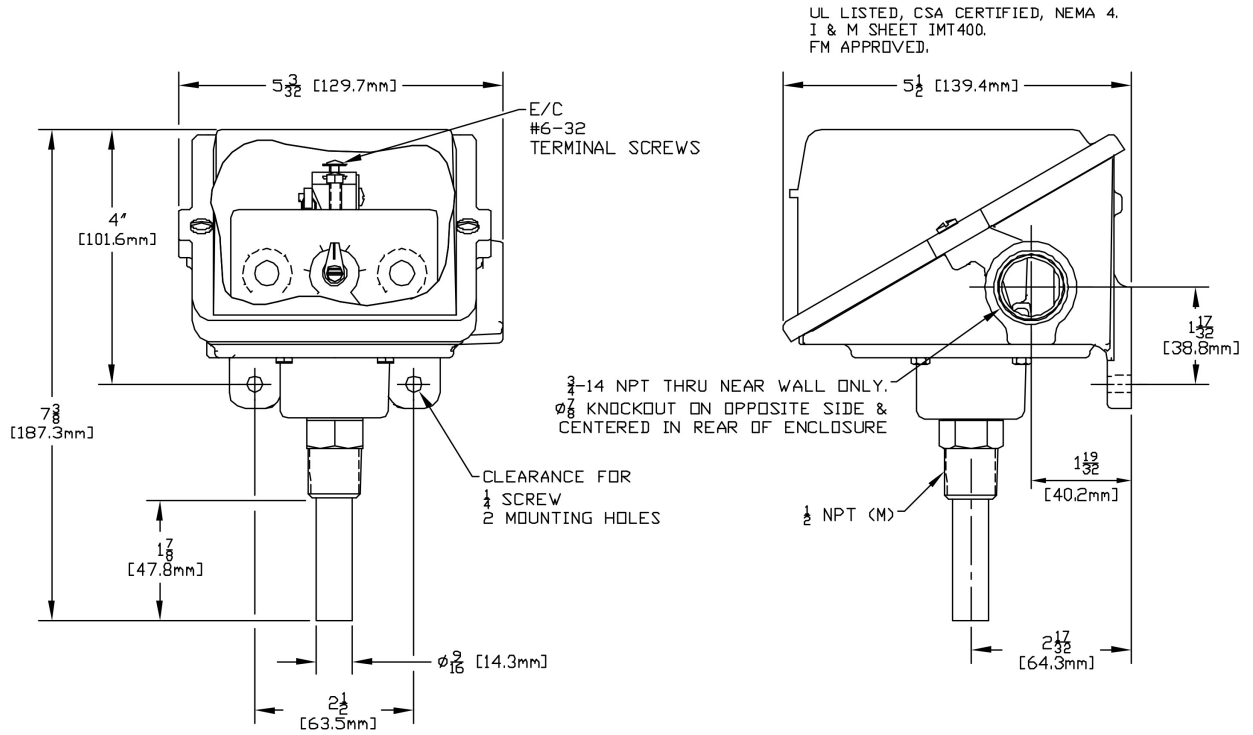
STORAGE TEMPERATURE	-65 to 160°F (-54 to 71°C)
AMBIENT TEMPERATURE	
Limits	-40 to 160°F (-40 to 71°C). Set point typically shifts less than 1% of range for a 50°F (28°C) ambient temperature change.
SHOCK	Set point repeats after 15 G, 10 millisecond duration
VIBRATION	Set point repeats after 2.5 G, 5-500 Hz
ENCLOSURE	Die cast aluminum, epoxy powder coated, gasketed, captive cover screws
ENCLOSURE CLASSIFICATION	Designed to meet enclosure type 4X requirements
SET POINT REPEATABILITY	± 2% of full scale range
SWITCH OUTPUT	two SPDT switches, may be separated up to 100% of range
ELECTRICAL RATING	15A 125/250/480 VAC resistive.
WEIGHT	Approx. 3 lbs.
ELECTRICAL CONNECTION	One 3/4" NPT and two 7/8" diameter knockouts
TEMPERATURE ASSEMBLY	Bulb and capillary: 6 feet 304 stainless steel Immersion stem: models 120 & 121: nickel-plated brass
TEMPERATURE FILL	Temperature Models: Model 1BS: solvent filled; models 2-8: non-toxic oil filled
TEMPERATURE DEADBAND	Type F typically 1% and type E, B & C typically 2% of range under laboratory conditions (70°F ambient circulating bath at rate of 1/2°F per minute change)



United States and Canada
UL listed, cUL certified
Temperature: UL 873;
CSA C22.2 No. 24, file # E10667

TM-S2 Temperature Monitor

A versatile vacuum, pressure, differential pressure and temperature switch for single or multiple switching capabilities.



United States and Canada
 UL listed, cUL certified
 Temperature: UL 873;
 CSA C22.2 No. 24, file # E10667