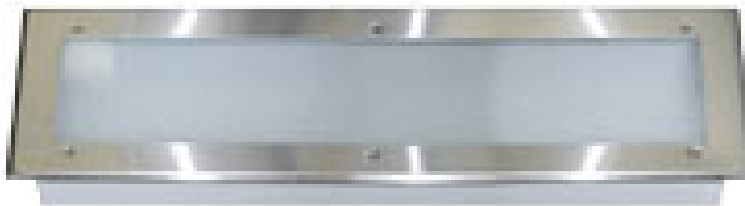


CKV LED Recessed Hood Lighting Fixture

Model: CKV-RC-LED-F



Energy-saving LED Recessed light for Commerical Kitchen Hood applications maximize light output at a fraction of the wattage consumed by standard incandescent and fluorescent lights.

FEATURES AND BENEFITS

LED recessed light fixture for exhaust canopy hood

- **Highest lumens Per Watt in the industry**
- **Temperature rated to 80°C (176°F)**
- **Only 4-1/2" (114mm) high...for limited overhead clearance applications**
- **Lamps contain no mercury or other hazardous materials**
- **50,000 hour lamp life**
- **Instant on; no ballast to warm up**
- **Tempered, prismatic glass diffuser with one piece satin finished stainless steel face frame to match hood interior**
- **Meets requirements for NFPA 96 and N.E.C. 410**

SPECIFICATIONS

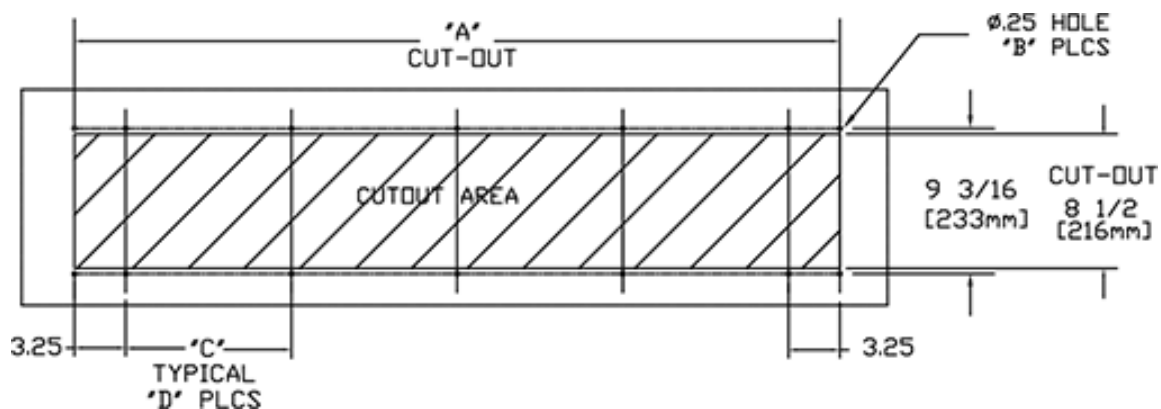
"A" Dimension	10 1/2 in, 267 mm
Bulb Type	LED
Color Temperature	6500K
Cut-Out Height	216 mm, 8 1/2 in
Cut-Out Width	1232 mm, 48 1/2 in
Holes Required	14
Total Lumens Output	4000
Voltage	120
Wattage	44

Overall Trim Size	"A" Cut Out	"B" Holes	"C" Spacing	"D" Each Side
10-1/4" x 38-1/4" (260mm x 972mm)	36-1/2" (927mm)	14 total	7-1/2" (191mm)	4 Plcs
10-1/4" x 50-1/4" (260mm x 1276mm)	48-1/2" (1232mm)	14 total	10-1/2" (267mm)	4 Plcs



CKV LED Recessed Hood Lighting Fixture

Model: CKV-RC-LED-F



Beam Angle

Mounting
Height
In Feet

